



WELCOME TO CSU 2017
ORIENTATION INDUCTION BOOKLET

SCHOOL OF NURSING, MIDWIFERY AND INDIGENOUS HEALTH

WELCOME

Message from the Executive Dean of the Faculty



Welcome to the Faculty of Science at Charles Sturt University. By gaining admission to your course you have already demonstrated a high level of achievement in your previous studies and I am delighted to welcome you as you move into the next exciting phase of your studies. CSU is committed to providing you with the highest standard of education and professional standing upon graduation, so I encourage you to take advantage of the many support strategies available to assist you in your studies.

Your Course Director and academic staff are happy to assist you with course-specific or subject-specific questions, respectively. Their contact details and consultation times are noted in your Subject Outline. For non-course related

inquiries, your first point of contact should be Student Central (<http://www.csu.edu.au/oncampus/student-support/student-central>). Information on how to access student counselling, health, disability and library services and how to find learning skills advisors or support for English language skills is available via the Student Support web page at <http://www.csu.edu.au/distance-education/student-support>.

Feedback from our students is very important to us at CSU. I therefore encourage you to take advantage of the opportunity to complete the on-line subject evaluations and course evaluations available to you. You will be notified via email or your subject Interact site when these become available and you will be provided easy links for access. You should be confident in the knowledge that the time you spend on these tasks will produce tangible outcomes that will further enhance our ability to create effective learning environments and thus enhance the standing of CSU and your degree.

This is a truly exciting time to be joining CSU. We have many new courses starting and new state-of-the-art teaching and research facilities on every campus. Our new on-line platform means you can work more interactively with your teachers and classmates, whether they are in the same town as you or half way across the world. Remember it's never too early to be thinking about the next step – Honours and PhD study opportunities are not so far away.

Have you thought about taking the opportunity to become involved in CSU's international activities? Nearly 20% of graduates from the Faculty of Science undertook international studies last year. Our students visited over 20 countries around the world, either through a session as an exchange student, international volunteering, accompanying a group of peers and academics on one of our many International Short Term Programs or by undertaking some of their professional practice internationally. Although you have just started your course, whether your intention is to study on campus or by distance education, now is a great time to be thinking about how you can combine your studies with international travel. Further information on these opportunities can be found through CSU Global <http://www.csu.edu.au/csuglobal/home> and the School will make sure you know of any upcoming Short Term Programs.

Finally, I encourage you to remember that attending university, whether on-campus or studying by distance, should be challenging but should also be lots of fun. I am delighted to take this opportunity to wish you every success in your course and look forward to meeting you at one of our award ceremonies (for high achieving students) and, of course, I'll see you at your graduation.

With best wishes

Professor Tim Wess

Dean, Faculty of Science

Welcome from the Head of School



Welcome to the School of Nursing, Midwifery and Indigenous Health.

The guiding ethos of the School is derived from the Wiradjuri people's phrase "*Yindymarra Winhanganha*" – the wisdom of respectfully knowing how to live well in a world worth living in. The Wiradjuri people are custodians of the lands upon which many of the University's campuses are located.

The wisdom of the Wiradjuri people is followed University-wide, to support the growth of positive environments for individuals, families, groups and communities.

Likewise, the School of Nursing, Midwifery and Indigenous Health is committed to educating all students to live well and help others to adopt healthy lifestyles in a range of settings. Academic staff are passionate about the transformational nature of education – it is through learning and growth that people achieve their potential!

The School offers undergraduate and postgraduate courses in three different disciplines:

- Nursing
- Midwifery
- Indigenous health.

Staff are Registered Nurses and / or Registered Midwives with postgraduate and higher qualifications; or highly qualified Indigenous academics. The School team works closely together to ensure the best possible experience for all students.

A strength of the courses lies in the opportunities provided to students to develop personally as well as acquiring the knowledge, attitudes and practical skills they will need to work as health professionals. While there is a particular demand for high-quality health professionals in regional, rural and remote locations, graduates of the School are also in high demand in urban and metropolitan settings, reflecting as they do the resilience and independent thinking for which rural Australians are known.

We wish you all the best as you progress through your course.

Catherine

Professor Catherine Hungerford
Head of School

FACULTY OF SCIENCE

Structure of the Faculty

The Faculty of Science is one of the most broadly based scientific academic concentrations in Australasia, with major foci in [agricultural sciences](#), [animal and veterinary sciences](#), [environmental sciences](#), [allied health](#), [human movement studies](#), [medical sciences](#), [dentistry and health sciences](#), [wine science](#), and [nursing, midwifery and Indigenous health](#).

The Faculty has more than 9000 students and over 500 staff dedicated to advancing scientific knowledge. The Faculty delivers flexible, innovative teaching programs designed to produce job-ready graduates for the professions. A leader in strategic and applied research in a wide array of sciences, the Faculty of Science enhances and extends knowledge, trains and educates future researchers and provides scientific solutions to current challenges. The staff and students in the Faculty achieve this through ethical practice, professional collaborations, industry involvement and a commitment to continual improvement.

If you are a new student to the Faculty of Science, we hope that you will enjoy studying science with us at Charles Sturt University. We have an outstanding reputation for innovation and excellence in teaching and research, and flexible, industry-aligned courses.

SCHOOL OF NURSING, MIDWIFERY AND INDIGENOUS HEALTH

The School of Nursing, Midwifery and Indigenous Health is currently located on five campuses in NSW (Albury-Wodonga, Bathurst, Dubbo, Orange and Wagga Wagga) and offers a range of undergraduate and postgraduate courses. The School has a well established reputation in providing high quality education programs, both on-campus (internal) and off-campus (online education and overseas), which equips graduates to function effectively in nursing, midwifery, and Indigenous mental health employment. The School has long standing affiliations with a number of health care providers across Australia, and academic staff have significant expertise in teaching and research related to primary health care, paediatrics, chronic health conditions, mental health, midwifery, and Indigenous mental health.

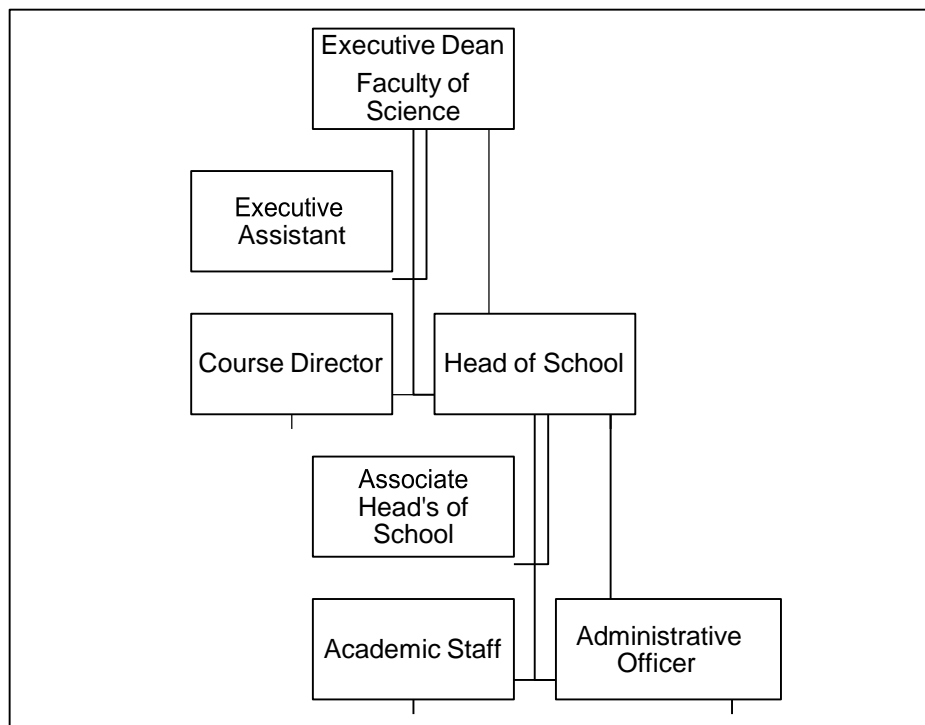


Structure of the School

The School comprises three distinct professional disciplines:

- Nursing
- Midwifery
- Indigenous health.

The Head of School is the overall manager of the School. They oversee what goes on in each of the disciplines, including the teaching, research, clinical placements, and community engagement that occurs. The Head of School is supported by the Courses Director, who oversee the quality of each of the courses; and also the Associate Heads of School, to oversee a range of portfolios.



Students who are enrolled in a course delivered by the School will go on to work as health professionals OR they will already be health professionals. For this reason, students are encouraged to follow the same processes that they will experience in the healthcare context when they experience issues, wish to provide feedback or make a complaint. For this reason, the School of Nursing, Midwifery and Indigenous Health has developed communication pathways that will guide students of the required processes for effective communication to address their questions, concerns or raise any issues with the teaching or leadership team.

This 'line management' structure ensures that issues are 'escalated' according to their level of risk and/or urgency.

For academic advice, students are asked to contact Academic Advisors. Contact details for Academic Advisors are provided on the next page.

Academic Staff

Academic staff are either Registered Nurses and / or Registered Midwives with postgraduate and higher qualifications; or highly qualified Indigenous health professionals.

The School team works closely together to ensure the best possible experience for all students.

For contact details of academic staff, please refer to School of Nursing, Midwifery and Indigenous Health staff webpage <http://science.csu.edu.au/schools/nurse/staff>

School Staff

The School also employs a range of professional staff to assist with the following:

- Administration
- Workplace Learning
- Clinical Support
- Technical Support.

Contact details for these staff are provided on the staff webpage <http://science.csu.edu.au/schools/nurse/staff>

School Office

Each campus has a School Office. Please refer to the Administrative staff on the campus you are enrolled through. For contact details, please refer to the School of Nursing, Midwifery and Indigenous Health staff webpage <http://science.csu.edu.au/schools/nurse/staff>

COURSE STRUCTURES

Information on all courses offered by the School of Nursing, Midwifery and Indigenous Health can be found on the School Courses' webpage <http://science.csu.edu.au/schools/nurse/courses>

Each course on this webpage is linked to the online course brochure which will provide additional information including the course structure.

For Bachelor of Nursing students (internal and distance education) progression models are available on the School of Nursing, Midwifery and Indigenous Health Current Students webpage <http://science.csu.edu.au/schools/nurse/courses>

For more information about courses and progression, please contact the Courses Director. Contact details for the Courses Director can be found on the School of Nursing, Midwifery and Indigenous Health staff webpage <http://science.csu.edu.au/schools/nurse/staff>

Workplace Learning

Workplace Learning, also known as work-integrated learning, practicum, professional practice, professional experience, internships, placements, fieldwork or clinical placements, allows students to learn through direct implementation of their future professional roles in real workplace settings.

Students enrolled in all disciplines across the School – nursing, midwifery and Indigenous health – will undertake workplace learning as part of their studies.

Some students may feel concerned about what their workplace learning experiences may involve. It is important to note that all students are well supported through this process. Disciplinary handbooks are provided to support students in their workplace learning. These Handbooks can be found by on the School's relevant webpage: <http://science.csu.edu.au/schools/nurse/workplace-learning>